

NOTE: STA. 234+67 & 234+58 = LAND PORTION
1000 SERIES DRISCO TO SUBAQUEOUS PORTION -
8600 DRISCO INTERCONNECTION

- NOTE:
1. CABLES AS SHOWN ARE ONLY THOSE THAT ARE VISIBLE.
 2. 25' WIDE PERMANENT EASEMENT AND CONSTRUCTION EASEMENT INFORMATION TAKEN FROM MAP PREPARED BY JOHN J. GALLAGHER, BELFORD N.J. L.S. #20374 AND DATED 7/8/85 AND REVISED 9/17/85.
 3. PIPE LOCATION AND CURVE DATA INFORMATION TAKEN FROM DESIGN PLAN PREPARED BY R.J. LONGO CONSTRUCTION COMPANY, DENVER, N.J. SIGNED BY JOHN A. PURCIELLO N.J. R.E. #22262 AND DATED 4/19/85 AND REVISED 10/8/85, SHEET 2 OF 3.
 4. THIS MAP SHOWS ONLY HORIZONTAL FIELD LAYOUT DATA, ALL OTHER INFORMATION IS BASED ON THE ABOVE NOTES. FELLOWS, READ & ASSOCIATES ASSUME NO LIABILITY FOR THE DESIGNS SHOWN HEREON.
 5. ASBUILT DATA SUPPLIED BY READING & BATES CONSTRUCTION CO., RIVER CROSSING DIVISION, TULSA, OKLAHOMA.

RECORD DRAWINGS
Revisions Drawn by J. BENNETT Date SEPT 1987
7/12/85 REV. JRM 26 1978
THESE RECORD DRAWINGS HAVE BEEN PREPARED, IN PART, ON THE BASIS OF INFORMATION COMPILED BY OTHERS. THEY ARE NOT INTENDED TO REPRESENT IN DETAIL THE EXACT LOCATION, TYPE OF COMPONENT NOR MANNER OF CONSTRUCTION. THE ENGINEER WILL NOT BE RESPONSIBLE FOR ANY ERRORS OR OMISSIONS WHICH HAVE BEEN INCORPORATED INTO THE RECORD DRAWINGS.



DESIGN	DR	CHK	APVD	NO.	DATE	REVISION	BY	APVD
	S. SHREWSBURY							

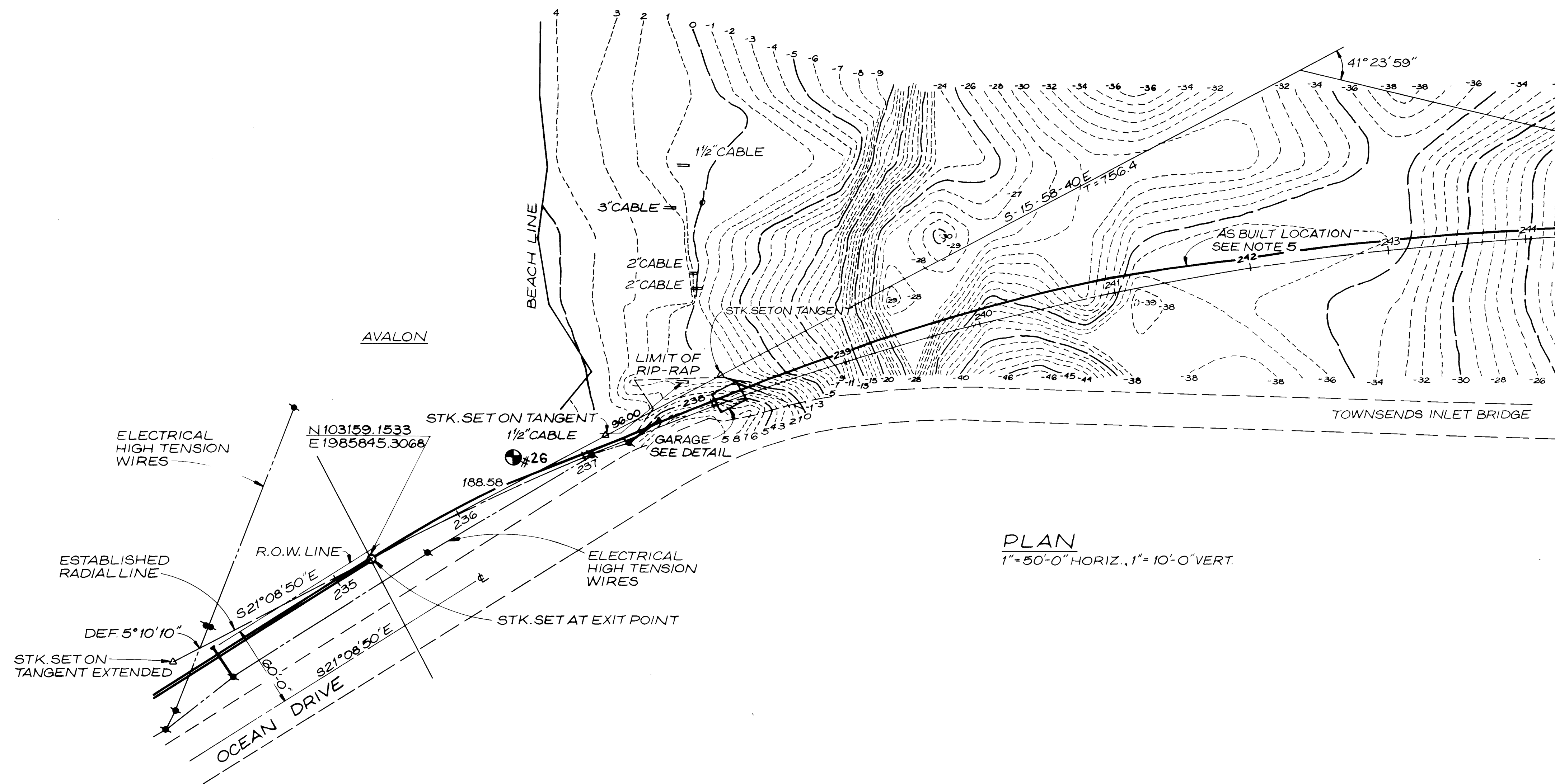
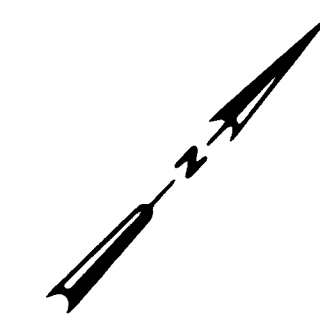
REUSE OF DOCUMENTS
THIS DOCUMENT, AND THE IDEAS AND DESIGNS INCORPORATED HEREIN, AS AN INSTRUMENT OF PROFESSIONAL SERVICE, IS THE PROPERTY OF CH2M HILL AND IS NOT TO BE USED, IN WHOLE OR IN PART, FOR ANY OTHER PROJECT WITHOUT THE WRITTEN AUTHORIZATION OF CH2M HILL.

VERIFY SCALE:
BAR IS ONE INCH ON ORIGINAL DRAWING.
IF NOT ONE INCH ON THIS SHEET, ADJUST SCALES ACCORDINGLY.

CAPE MAY COUNTY MUNICIPAL UTILITIES AUTHORITY
SEVEN MILE BEACH/MIDDLE REGION
REGIONAL FORCE MAINS

PLAN AND PROFILE
OCEAN DRIVE AVALON
STA. 218+00 TO STA. 235+00
TOWNSEND'S INLET CROSSING

SHEET 22 OF 83
DWG NO. 22(REVISED)
DATE SEPT. 1987
PROJ. NO. W 18163.D2



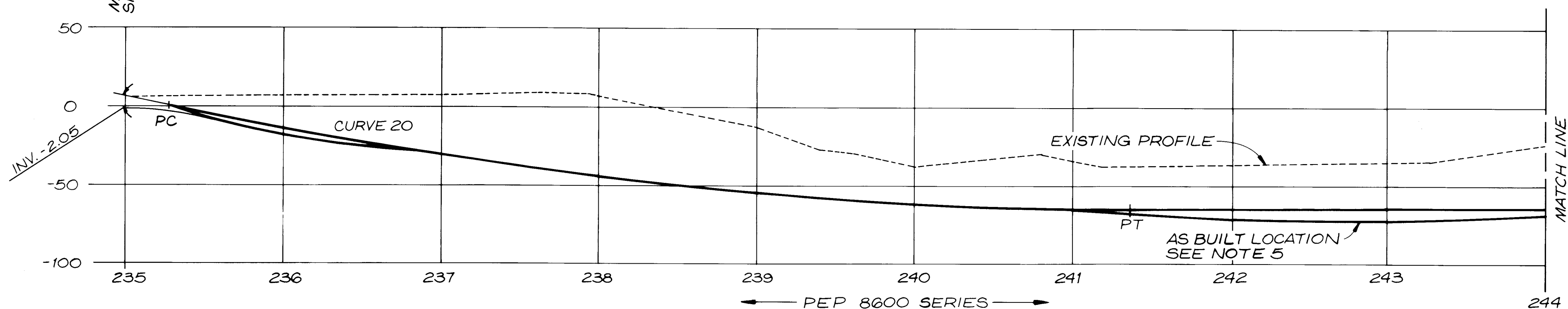
PLAN
1" = 50'-0" HORIZ., 1" = 10'-0" VERT.

- NOTE:**
1. CABLES AS SHOWN ARE ONLY THOSE THAT ARE VISIBLE.
 2. 25' WIDE PERMANENT EASEMENT AND CONSTRUCTION EASEMENT INFORMATION TAKEN FROM MAPS PREPARED BY JOHN J. GALLAGHER, BELFORD, N.J. L.S. # 20374 AND DATED 7/9/85 AND REVISED 9/17/85.
 3. PIPE LOCATION AND CURVE DATA INFORMATION TAKEN FROM DESIGN PLAN PREPARED BY R.J. LONGO CONSTRUCTION COMPANY, DENVILLE, N.J. SIGNED BY JOHN A. PURCIELLO, N.J. P.E., # 22262 AND DATED 4/19/85 AND REVISED 10/8/85, SHEET 2 OF 3.
 4. THIS MAP SHOWS ONLY HORIZONTAL FIELD LAYOUT DATA, ALL OTHER INFORMATION IS BASED ON THE ABOVE NOTES. FOLLOWERS, READ & ASSOCIATES ASSUME NO LIABILITY FOR THE DESIGNS SHOWN HEREON.
 5. ASBUILT DATA SUPPLIED BY READING & BATES CONSTRUCTION CO., RIVER CROSSING DIVISION, TULSA, OKLAHOMA.

MATCH LINE SHEET 22 REVISED

January 25-29, 1982

SOIL TEST RESULTS					
Sample No.	Location	Resistivity ohm/cm	Redox mv	pH	Soil Description
W26	Ocean and Townsend inlet bridge	1,800	-180	6.9	Dark gray, silty, organic clay, saturated



PROFILE
1" = 50'-0" HORIZ. AND VERT.

RECORD DRAWINGS

Revisions Drawn by J. BENNETT Date SEPT 1987

THESE RECORD DRAWINGS HAVE BEEN PREPARED, IN PART, ON THE BASIS OF INFORMATION COMPILED BY OTHERS. THEY ARE NOT INTENDED TO REPRESENT IN DETAIL THE EXACT LOCATION, TYPE OF COMPONENT NOR MANNER OF CONSTRUCTION. THE ENGINEER WILL NOT BE RESPONSIBLE FOR ANY ERRORS OR OMISSIONS WHICH HAVE BEEN INCORPORATED INTO THE RECORD DRAWINGS.



DSGN					
DR	S. SHREWSBURY				
CHK					
APVD					
	NO.	DATE	REVISION	BY	APVD

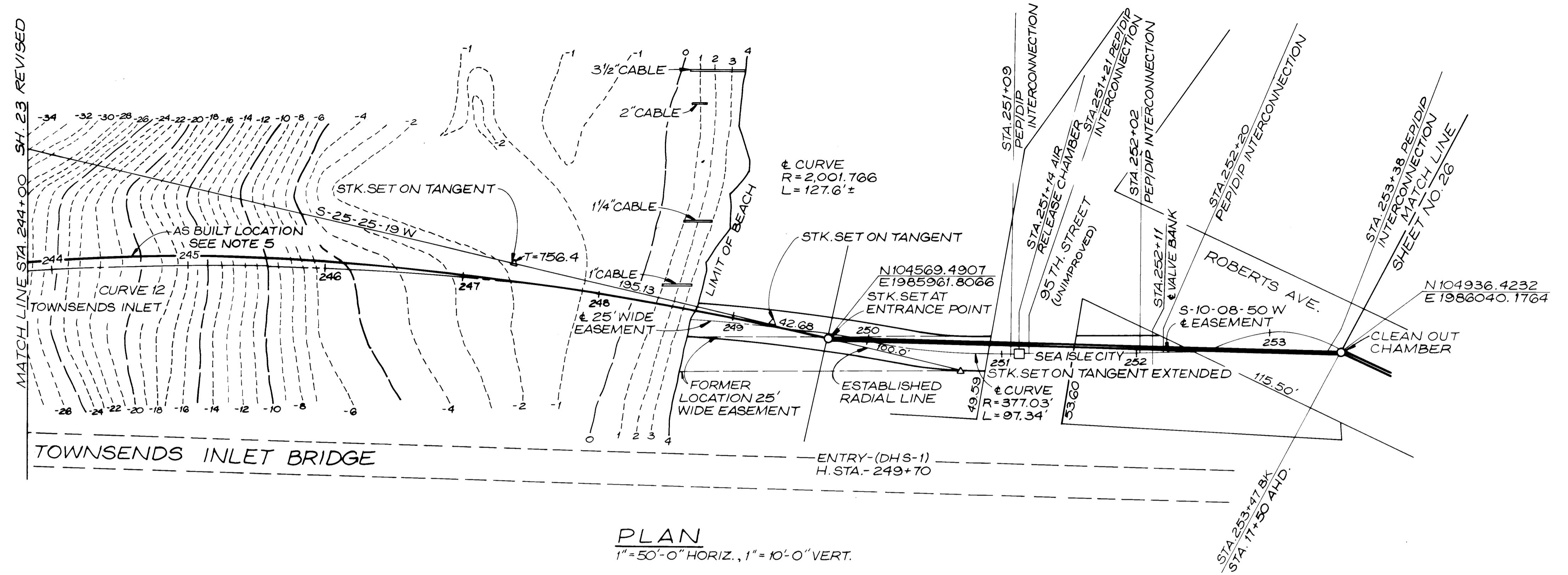
REUSE OF DOCUMENTS
THIS DOCUMENT, AND THE IDEAS AND DESIGNS INCORPORATED HEREIN, AS AN INSTRUMENT OF PROFESSIONAL SERVICE, IS THE PROPERTY OF CH2M HILL AND IS NOT TO BE USED, IN WHOLE OR IN PART, FOR ANY OTHER PROJECT WITHOUT THE WRITTEN AUTHORIZATION OF CH2M HILL.
©CH2M HILL, INC.

VERIFY SCALES
BAR IS ONE INCH ON ORIGINAL DRAWING.
0 [] 1"
IF NOT ONE INCH ON THIS SHEET, ADJUST SCALES ACCORDINGLY.

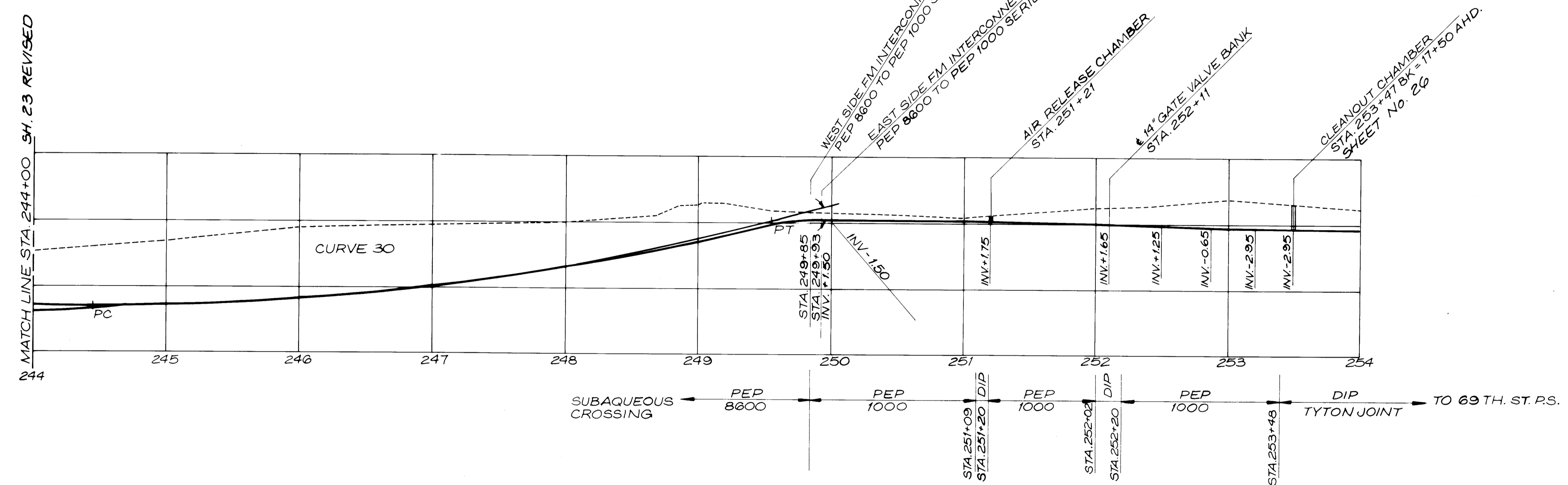
CAPE MAY COUNTY MUNICIPAL UTILITIES AUTHORITY
SEVEN MILE BEACH/MIDDLE REGION
REGIONAL FORCE MAINS

PLAN AND PROFILE
TOWNSEND'S INLET CROSSING
STA. 235+00 TO STA. 244+00

SHEET	23 OF 83
DWG NO.	23 (REVISED)
DATE	SEPT. 1987
PROJ. NO.	W 18163.D2



- NOTE:
1. CABLES AS SHOWN ARE ONLY THOSE THAT ARE VISIBLE.
 2. 25' WIDE PERMANENT EASEMENT AND CONSTRUCTION EASEMENT INFORMATION TAKEN FROM MAP PREPARED BY JOHN J. GALLAGHER, BELFORD, N.J. L.S. #20374 AND DATED 7/18/85 AND REVISED 9/17/85.
 3. PIPE LOCATION AND CURVE DATA INFORMATION TAKEN FROM DESIGN PLAN PREPARED BY R.J. LONGO CONSTRUCTION COMPANY, DENVER, N.J. SIGNED BY JOHN A. PURCIELLO, N.J. P.E. #22262 AND DATED 4/19/85 AND REVISED 10/8/85, SHEET 2 OF 3.
 4. THIS MAP SHOWS ONLY HORIZONTAL FIELD LAYOUT DATA, ALL OTHER INFORMATION IS BASED ON THE ABOVE NOTES. FELLOWS, READ & ASSOCIATES ASSUME NO LIABILITY FOR THE DESIGNS SHOWN HEREON.
 5. ASBUILT DATA SUPPLIED BY READING & BATES CONSTRUCTION CO., RIVER CROSSING DIVISION, TULSA, OKLAHOMA.
 6. DRAWING NO. 25 ELIMINATED BY REVISED ROUTE.



RECORD DRAWINGS
Revisions Drawn by J.BENNETT Date SEPT 1987

THESE RECORD DRAWINGS HAVE BEEN PREPARED, IN PART, ON THE BASIS OF INFORMATION COMPILED BY OTHERS. THEY ARE NOT INTENDED TO REPRESENT IN DETAIL THE EXACT LOCATION, TYPE OF COMPONENT NOR MANNER OF CONSTRUCTION. THE ENGINEER WILL NOT BE RESPONSIBLE FOR ANY ERRORS OR OMISSIONS WHICH HAVE BEEN INCORPORATED INTO THE RECORD DRAWINGS.



OSGN	S.SHREWSBURY				
DR					
CHK					
APVD					
	NO.	DATE	REVISION	BY	APVD

REUSE OF DOCUMENTS
THIS DOCUMENT, AND THE IDEAS AND DESIGNS INCORPORATED HEREIN, AS AN INSTRUMENT OF PROFESSIONAL SERVICE, IS THE PROPERTY OF CH2M HILL AND IS NOT TO BE USED, IN WHOLE OR IN PART, FOR ANY OTHER PROJECT WITHOUT THE WRITTEN AUTHORIZATION OF CH2M HILL.
*CH2M HILL, INC.

VERIFY SCALES
BAR IS ONE INCH ON ORIGINAL DRAWING.
IF NOT ONE INCH ON THIS SHEET, ADJUST SCALES ACCORDINGLY.

CAPE MAY COUNTY MUNICIPAL UTILITIES AUTHORITY
SEVEN MILE BEACH/MIDDLE REGION
REGIONAL FORCE MAINS

PLAN AND PROFILE
TOWNSEND'S INLET CROSSING
SEA ISLE CITY
STA.244+00 TO STA.253+47 (17+50)

SHEET	24 OF 23
DWG NO.	24 (REVISED)
DATE	SEPT. 1987
PROJ NO.	W 18163.D2