

CAPE MAY COUNTY BRIDGE COMMISSION  
NEW JERSEY

BRIDGE CONSTRUCTION FOR  
OCEAN HIGHWAY BRIDGES

P.W.A. PROJECT N.J. 1038-F

CAPE MAY COUNTY BRIDGE COMMISSION

EDWARD B. BECKER, CHAIRMAN - C. FRED CRONECKER, Sec'y and TREAS.  
LEMUEL E. MILLER, Jr., Vice CHAIRMAN - ROBERT K. BELL, COUNSEL

LIST OF DRAWINGS — CONTRACTS NOS 4 TO 10

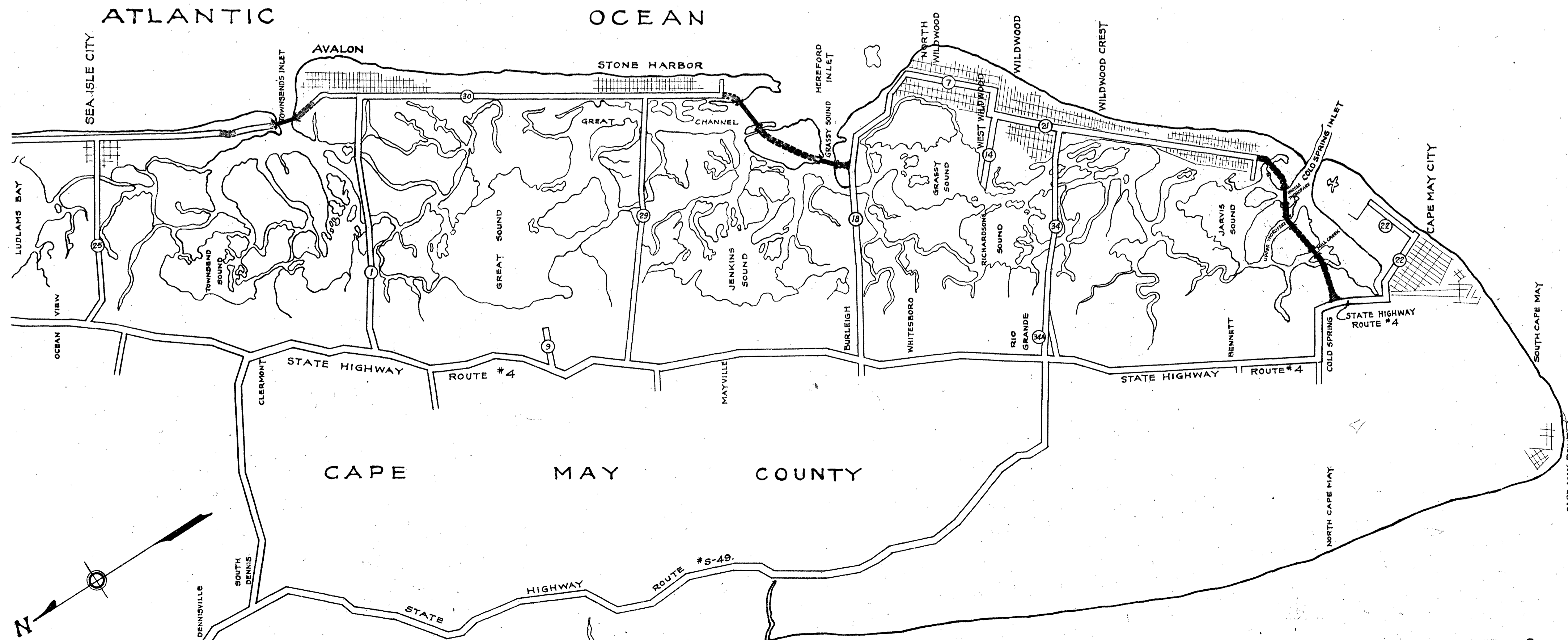
- 1 GENERAL MAP AND COVER SHEET
- 2 BRIDGE LOCATION PLANS
- 3 GENERAL PLAN AND ELEVATION-TOWNSENDS INLET BRIDGE
- 4 GENERAL PLAN AND ELEVATION-GREAT CHANNEL BRIDGE
- 5 GENERAL PLAN AND ELEVATION-GRASSY SOUND BRIDGE
- 6 GENERAL PLAN AND ELEVATION-MIDDLE THOROFARE BRIDGE
- 7 GENERAL PLAN AND ELEVATION-UPPER THOROFARE AND MILL CREEK BRIDGES
- 8 BORINGS - TOWNSENDS INLET BRIDGE
- 9 BORINGS - GREAT CHANNEL BRIDGE
- 10 BORINGS - GRASSY SOUND BRIDGE
- 11 BORINGS - MIDDLE THOROFARE BRIDGE
- 12 BORINGS - UPPER THOROFARE AND MILL CREEK BRIDGES
- 13 BASCULE SPANS - GENERAL ARRANGEMENT
- 14 BASCULE SPANS - FLOOR AND LATERALS
- 15 BASCULE SPANS - GIRDERS

- 16 BASCULE SPANS - COUNTERWEIGHTS
- 17 BASCULE PIERS - STRUCTURAL METAL
- 18 BASCULE PIERS - STRUCTURAL METAL AND FLOOR
- 19 BASCULE PIERS
- 20 BASCULE PIERS
- 21 OPERATORS HOUSES
- 22 FENDERS
- 23 FENDERS
- 24 RACKS, TRUNNIONS, BEARINGS AND LOCKS
- 25 OPERATING MACHINERY
- 26 SCHEMATIC WIRING DIAGRAM
- 27 GIRDER SPANS ADJACENT TO BASCULES
- 28 TOLL HOUSES AND TRAFFIC GATES
- 29 TOLL HOUSES
- 30 110 FT. GIRDER SPANS
- 31 78 FT. GIRDER SPANS
- 32 PIERS FOR GIRDER SPANS - SHAFTS

- 33 PIER BASES
- 34 35 FT. STEEL BEAM SPANS
- 35 35 FT. STEEL BEAM SPANS
- 36 35 FT. STEEL BEAM SPANS
- 37 35 FT. STEEL BEAM SPANS
- 38 ABUTMENTS FOR STEEL BEAM SPANS
- 39 ABUTMENTS FOR STEEL BEAM SPANS
- 40 25 FT. CONCRETE TRESTLE SPANS
- 41 ABUTMENTS FOR CONCRETE TRESTLE SPANS
- 42 TOWNSENDS INLET APPROACHES - GRADING AT ABUTMENTS
- 43 TOWNSENDS INLET NORTH APPROACH - PLAN AND PROFILE
- 44 TOWNSENDS INLET NORTH APPROACH - PLAN AND PROFILE
- 45 TOWNSENDS INLET SOUTH APPROACH - PLAN AND PROFILE
- 46 TOWNSENDS INLET SOUTH APPROACH - PLAN AND PROFILE
- 47 TOWNSENDS INLET APPROACHES - CROSS SECTIONS
- A4 ENDS OF EMBANKMENTS

- 29A TOLL HOUSE REVISIONS
- 38A CHANGE IN ABUTMENTS
- 48 DRAINAGE CULVERT - LOWER THOROFARE
- 49 NAME PLATES
- 50 TELEPHONE CONDUITS
- 51 INSTALLATION OF TOLL COLLECTION EQUIPMENT
- 52 CLEARANCE GAGES

ASH-HOWARD-NEEDLES & TAMMEN  
CONSULTING ENGINEERS



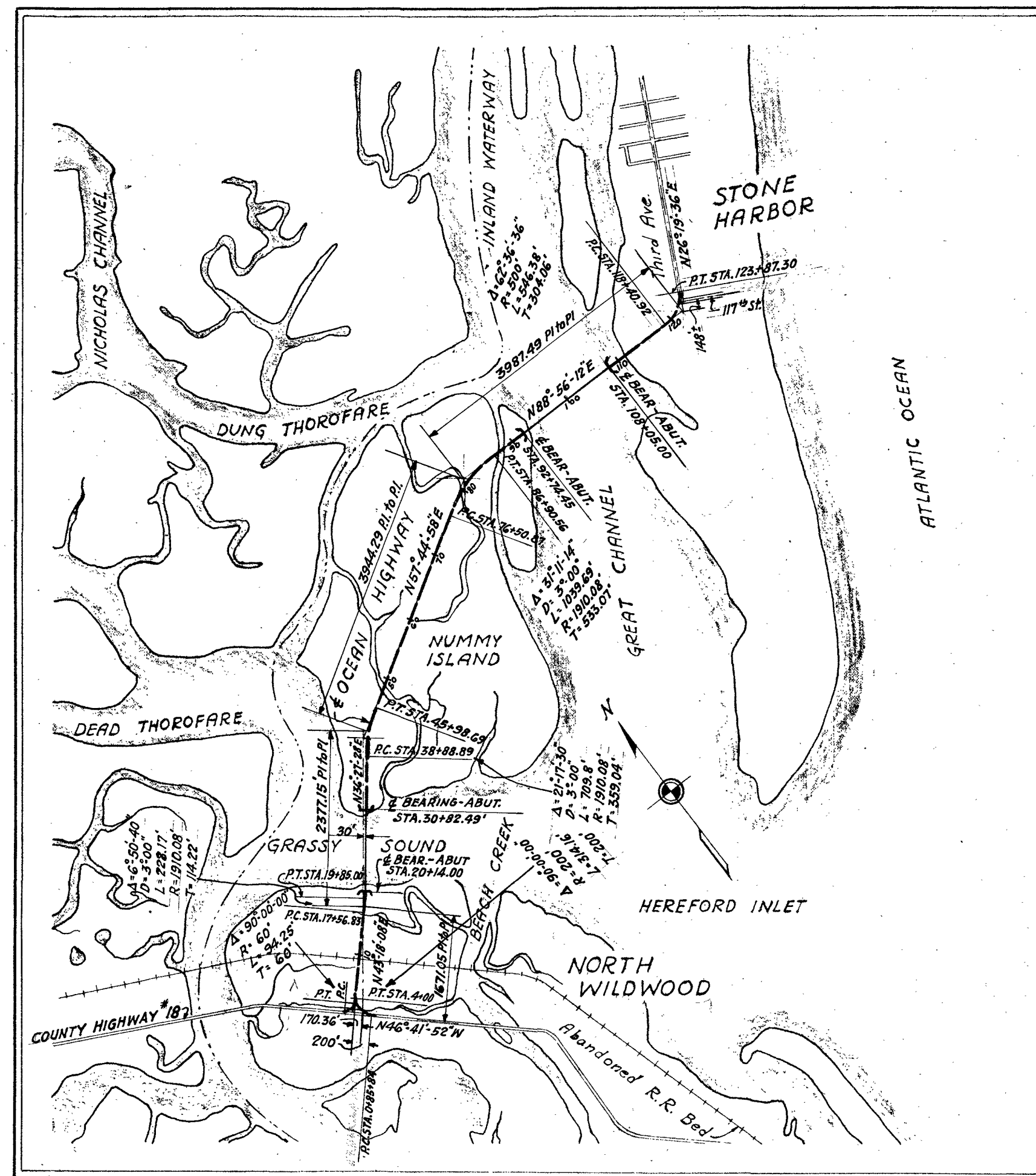
APPROVED FOR  
ASH-HOWARD-NEEDLES & TAMMEN  
BY Henry K. Tammen  
DATE Nov. 17, 1938.

7/19/45  
File GRASSY SOUND  
CONS  
1-53  
S/10/3  
B. K. Bell  
1-54

070720106

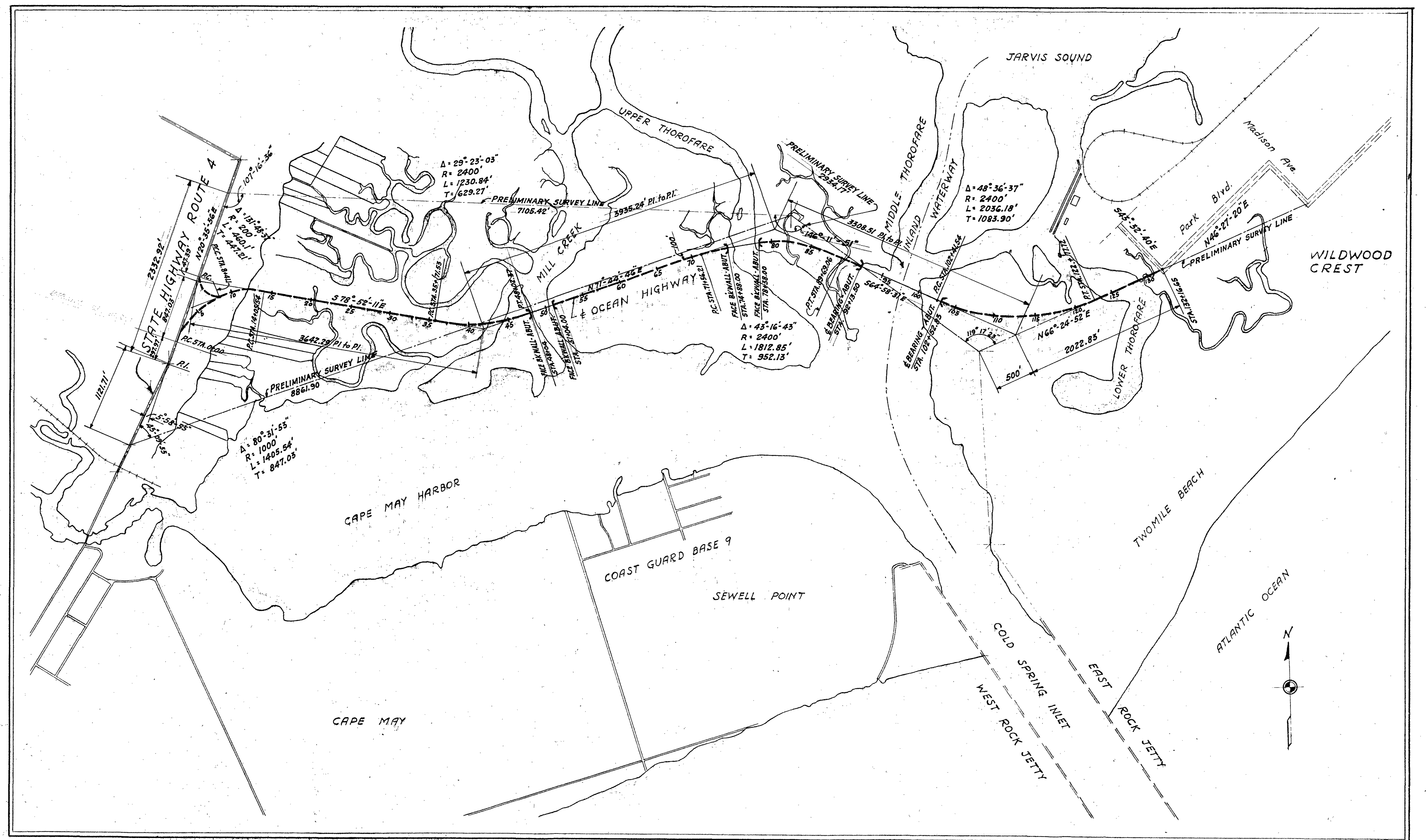
MISS-11-01





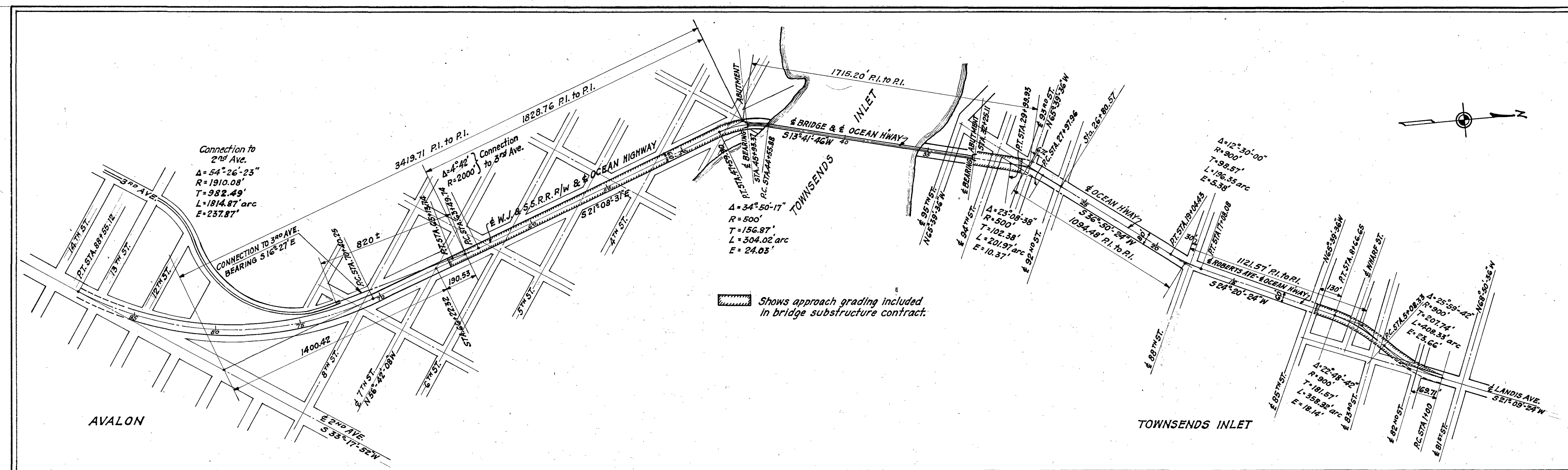
LOCATION MAP - GRASSY SOUND AND GREAT CHANNEL BRIDGES

Scale: 1" = 1666 2/3'



LOCATION MAP - MILL CREEK, UPPER THOROFARE AND MIDDLE THOROFARE BRIDGES

Scale: 1" = 833 1/3'



LOCATION MAP - TOWNSEND'S INLET BRIDGE AND APPROACHES

Scale: 1" = 400'

For General Notes, see Sht #13.  
Bearings given are true bearings.

CAPE MAY COUNTY  
BRIDGE COMMISSION  
NEW JERSEY

BRIDGE CONSTRUCTION  
FOR  
OCEAN HIGHWAY BRIDGES

P.W.A. PROJECT N.J. 1038-F

BRIDGE LOCATION PLANS

SCALE AS NOTED  
MADE BY S.M.K. DATE 12-28-38  
TRACED BY M.C. DATE 11-2-38  
CHECKED BY M.V. DATE 11-2-38

ASH-HOWARD-NEEDLES & TAMMEN  
CONSULTING ENGINEERS  
KANSAS CITY NEW YORK

SHEET No. 2